

# Alder Side Table

Biodegradable plastic mixed with coffee shell or wood waste

The Alder Collection by Patricia Urquiola is our first collection in biodegradable Matek™. Extensive testing and development have enabled us to use biodegradable plastic with our Matek™ technology, thus enabling the Matek™ to eventually decompose back into nature. Wanting to bring some of nature's beauty into our living spaces, Urquiola has let herself be inspired by nature in both shape and material. The collection is imagined for indoor and outdoor use.



**Biodegradable  
Sand**



**Biodegradable  
Earth Grey**



**Biodegradable  
Light Green**



**Biodegradable  
Terracotta**



**Designed by**  
Patricia Urquiola

**Item no.**  
30301 Alder Side Table  
– Biodegradable Sand\*  
30302 Alder Side Table  
– Biodegradable Earth Grey\*  
30303 Alder Side Table  
– Biodegradable Light Green\*  
30304 Alder Side Table  
– Biodegradable Terracotta\*

*\*Variation possible due to recycled materials*

**Country of origin**  
Latvia

**Materials**  
Biodegradable plastic mixed with either coffee shell waste from BKL's coffee roasting process or wood waste.

**Inner frame**  
94% recycled steel

**Special designed feet**  
100% recycled plastic

**Test**  
EN 581  
ANSI/BIFMA x5.5  
ANSI/BIFMA x5.4

**Dimensions**  
H 50.4 cm W 45 cm D 45 cm /  
H 19.84" W 17.72" D 17.72"

**Weight**  
11.7 kg / 25.7 lbs

**Packaging** 1 box / 1 pcs.

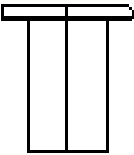
**Maintenance**  
Please follow our material cleaning and care guide [here](#)

**Environment**  
Indoor / outdoor

**mater**

# Mater Sustainability Factsheet

Alder Side Table



## Made of

Biodegradable Matek™ and partly recycled steel

### Item no. 11994 / 11993

Biodegradable Sand  
Biodegradable Earth Grey

Made from biodegradable plastic and coffee shell waste

CO<sub>2</sub> Footprint  
80 kg CO<sub>2</sub>e

= 6 kg of waste materials

### Item no. 30303

Biodegradable Light Green

Made from biodegradable plastic and wood waste

CO<sub>2</sub> Footprint  
75 kg CO<sub>2</sub>e

= 6 kg of waste materials

### Item no. 30304

Biodegradable Terracotta

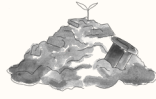
Made from biodegradable plastic and wood waste

CO<sub>2</sub> Footprint  
80 kg CO<sub>2</sub>e

= 6 kg of waste materials

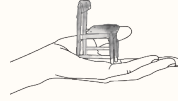
\*calculated using Målbar Software V. 2.9608 21-03-2024

# Mater Sustainability Factsheet



## Biodegradable Matek™

Developments in our technology have enabled us to use bio-plastic as a binder for our Matek™ production. This allows the Matek™ to eventually be decomposed by living organisms in the same way as wood or any other natural material. Read more about Matek [here](#)



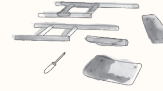
## Mater Take-Back

We unhesitatingly offer to take all our furniture made from Matek™ back at the end of its life to recycle it into new furniture. Read more about how Mater Take-Back works [here](#)



## Steel

The steel used for this product is composed of 94% recycled steel. Steel is a strong and light material with the quality that it can be processed in unlimited ways.



## Repair for long lasting

Good products, are made to be used. To give the products the longest possible life, we want to make it easy for you to repair them yourself.

Contact our customer service for more info [here](#)



## CO<sub>2</sub> Footprint

At Mater, we believe in the importance of transparency. By doing Life Cycle Assessments (LCA) on our furniture, we can analyse the total climate emission for each of our product's lifespan.



## Green energy

This product is produced in a production facility that is 100% powered by hydropower – a renewable energy resource.



## Packaging

The cardboard packing for this product is FSC-certified - both inside and out. The inner construction that secures the product during transportation is designed to function fully without any use of plastic or foam.

**mater**